



Pinellas Central Press

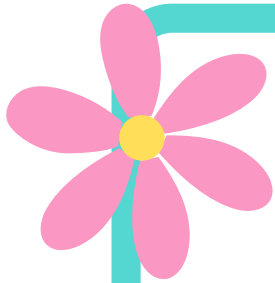
April 2025



A Message from Mrs. Canatta

Families,

Please make sure you are connected to your teacher's Dojo as important PM3 test dates will be shared. It is extremely important that your student is at school on time for the full day as we approach our final testing window. We need your support in making sure your student is at school and engaging in learning, while not disrupting the learning of others. Thank you for partnering with us to make sure your student is being the most successful version of themselves while at school. We need you to help keep PCE an "A" school! Thank you for the work you do to partner with us to make sure we keep PCE the place to be!



Important Dates

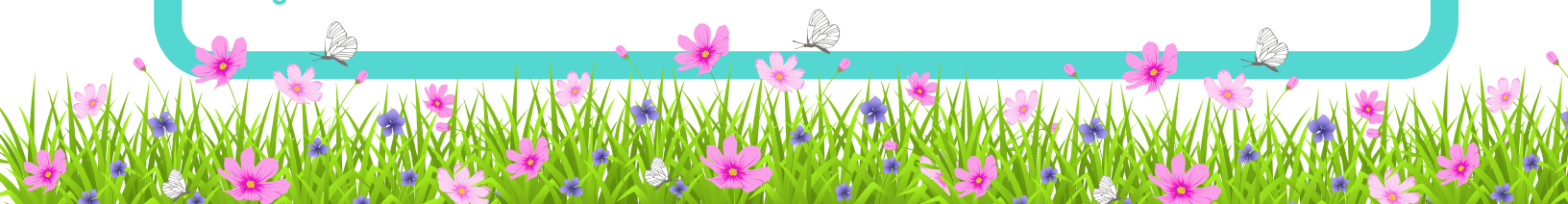
April 3 – Report Cards go home

April 18 – School Closed

April 21 – School Closed

Message From the Media Center

Please make sure that your child is returning his/her books on time. If you need to pay for a lost book please send in exact cash. The cash should be in an envelope with your child's name on it.



A MESSAGE FROM PTA

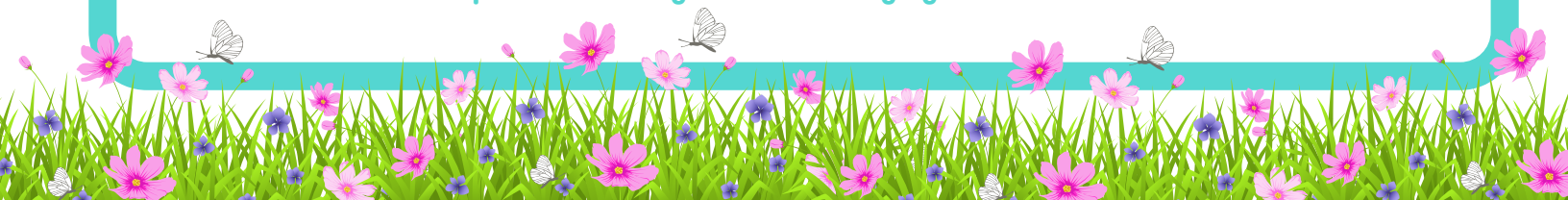
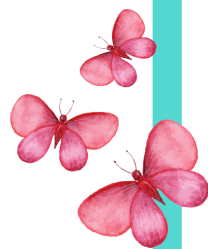
The PTA is looking for new board members for the 2025–2026 school year. If you are interested please reach out to Mr. Johnson, you may call the school or email him at johnsonmicha@pcsb.org. There is an informational meeting at 6:00 on Tuesday, April 1st, at school, if you are interested in learning more about the PTA and how you can support our school.

Counselor's Corner

April is Autism Awareness Month! Autism, or autism spectrum disorder (ASD), refers to a broad range of conditions characterized by challenges with social skills, repetitive behaviors, speech and nonverbal communication. According to the Centers for Disease Control, autism affects an estimated 1 in 36 children and 1 in 45 adults in the United States today. Autism looks different for everyone, and each person with autism has a distinct set of strengths and challenges. Some autistic people can speak, while others are nonverbal or minimally verbal and communicate in other ways. Some have intellectual disabilities, while some do not. Some require significant support in their daily lives, while others need less support and, in some cases, live entirely independently. On average, autism is diagnosed around age 5 in the U.S., with signs appearing by age 2 or 3. Learn more at [Pinellas Central Press](#).

Character Education: Mustangs have been recognized for showing Cooperation in February and Responsibility in March. In April, we will be looking for students who demonstrate Honesty and they will be celebrated at the end of the month on the morning announcements.

Also in April, we will be celebrating Say Something Week (March 31st – April 4th) reminding students to speak up to trusted adults when they see someone who needs help and Kindness Week (April 28th – May 2nd) encouraging students to be kind to all kinds!





If you have friends or other family members interested in attending Pinellas Central next year, please reach out to us with your questions or to schedule a tour of our school. Our staff is available to assist you.

Special Assignment Requests allow families to apply to attend a school other than their neighborhood or zoned school. Requests are granted on a space-available basis. All such assignments are valid through the highest grade level. Bus transportation is not provided for granted Special Assignment Requests. Families who were granted SARs were and are contacted by the email listed in the application. All other families are on a wait list.

Application Period April 2 -18, 2025



Please note: your child must be enrolled for the 2025-26 school year in order to apply for a SAR.

Do you need to your update email, phone number, add or remove contacts, or submit legal documents for your student? Please email Ms. Gipson at Gipsont@pcsb.org for assistance.



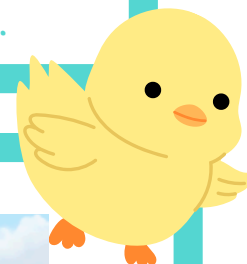


Cycle 3 Testing

Grades VPK-Grade 2 Beginning April 14- April 30

Grades 3-5 beginning May 1-May 23

We will communicate specific days of testing as the dates get closer.



**SUMMER
BRIDGE**

**JOIN US FOR
RISING KINDERGARTEN**

PREPARE YOUR CHILD FOR KINDERGARTEN THIS SUMMER

	JUNE 2-26 MONDAY-THURSDAY		TRANSPORTATION AVAILABLE TO ASSIGNED SCHOOL
	8:00 A.M. – 12:00 P.M.		LUNCH SERVED

Registration opens March 25th for Summer 2025 in
the Focus Student Information System

Learn more: PCSB.ORG/RISINGK

QUESTIONS? CALL 727-588-6513

